

**FLASH**  
**PHOTOGRAPHY**

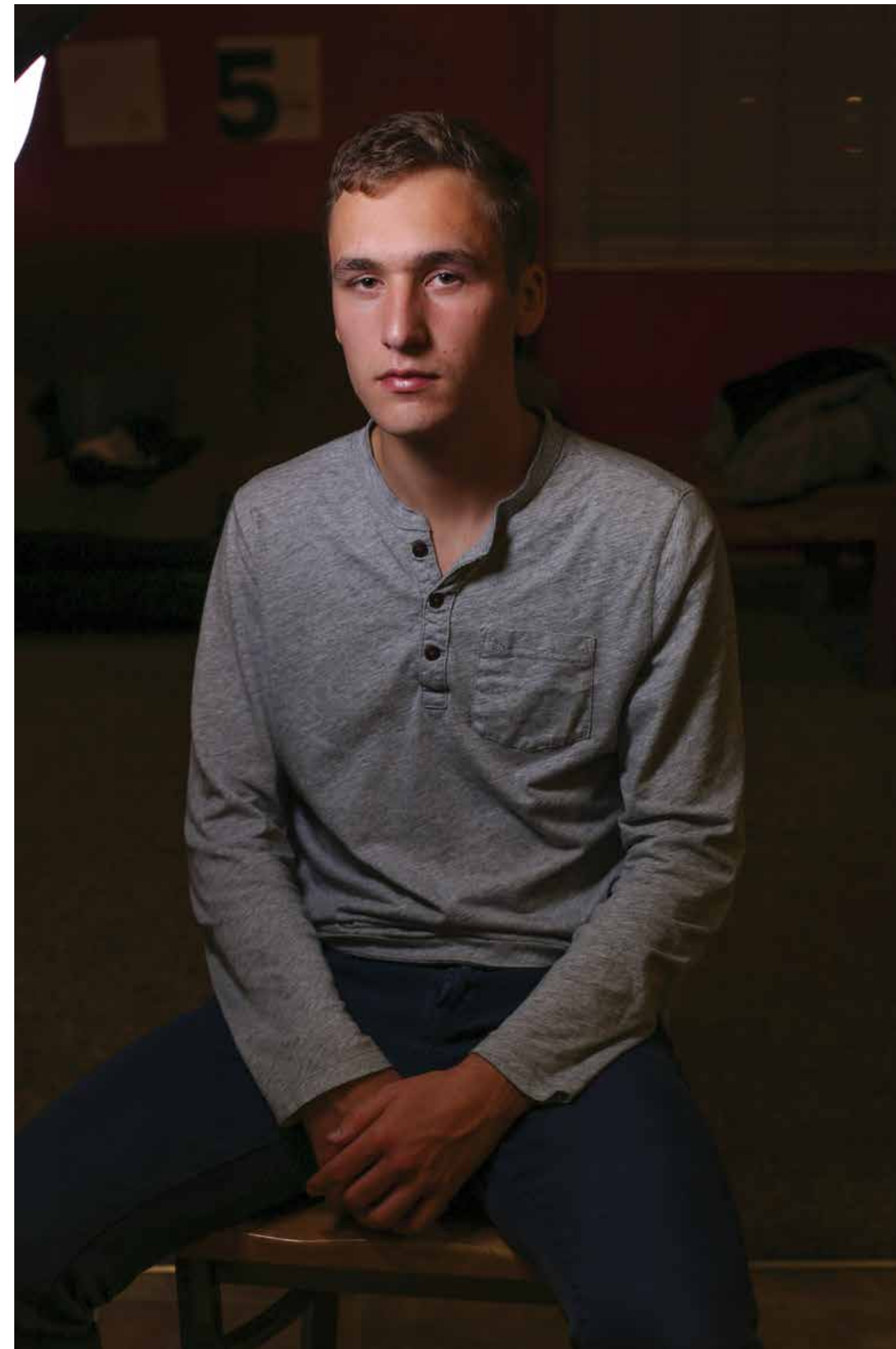
# SHUTTER SPEED:

Controls ONLY  
ambient light

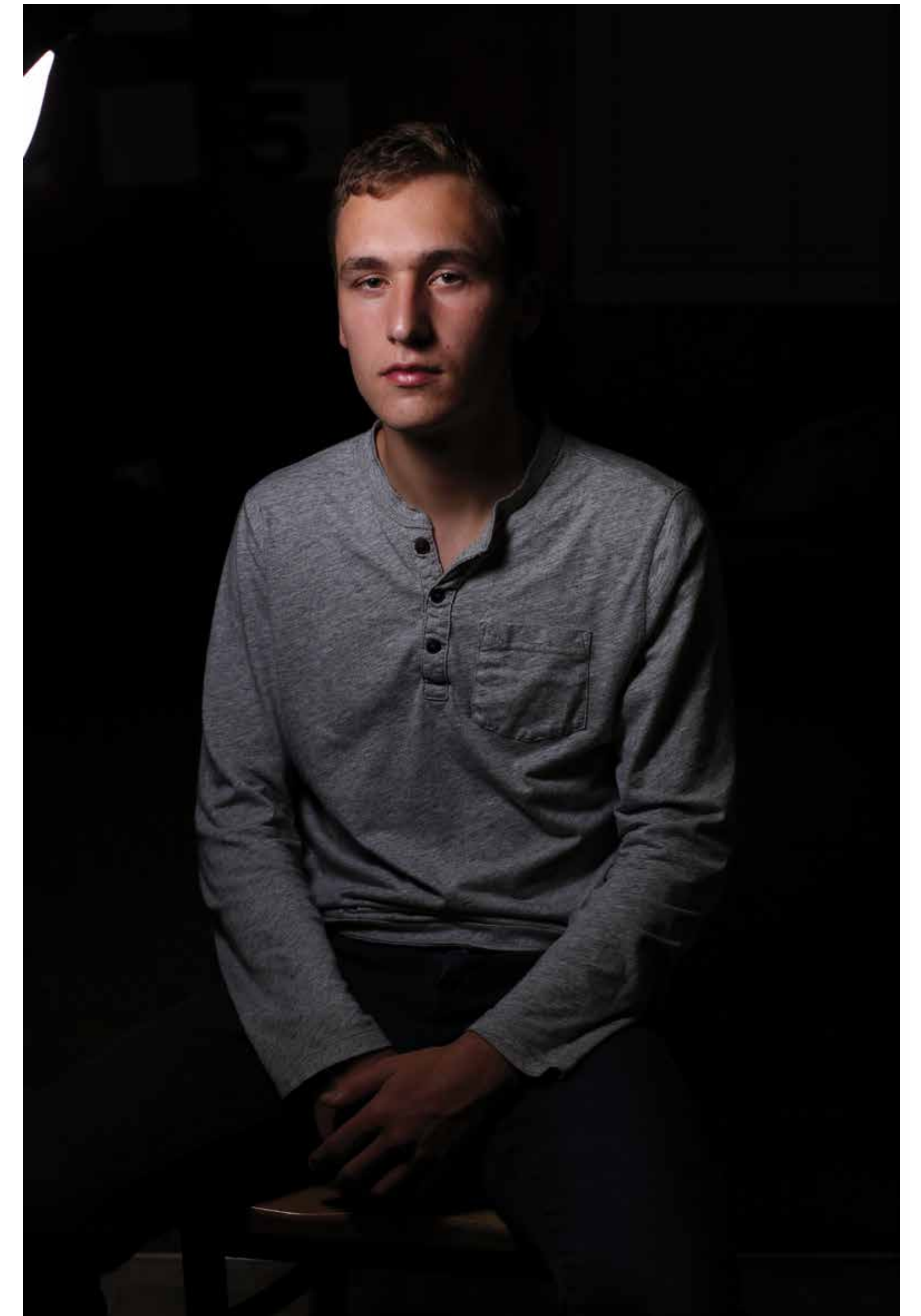
DOESN'T  
AFFECT THE  
FLASH!

## Ambient Light:

- \* Light that is already  
in the room
- \* Constant Light
- \* Sunlight



**f/4 1/30 ISO: 100**



**f/4 1/200 ISO: 100**

# **APERTURE AND ISO:**

Control flash and ambient light

# LIGHT QUALITY

HARSH LIGHT

SMALL LIGHT SOURCE



SOFT LIGHT

BIG LIGHT SOURCE



**HARSH LIGHT**  
**SMALL LIGHT SOURCE**



SAME DISTANCE OF LIGHT SOURCE FROM THE SUBJECT  
**DIFFERENT MODIFIER**



**SNOOT**



**XL ROGUE**

**SOFT LIGHT**  
**BIG** LIGHT SOURCE



# **XL ROGUE**



**VERY CLOSE TO THE SUBJECT**

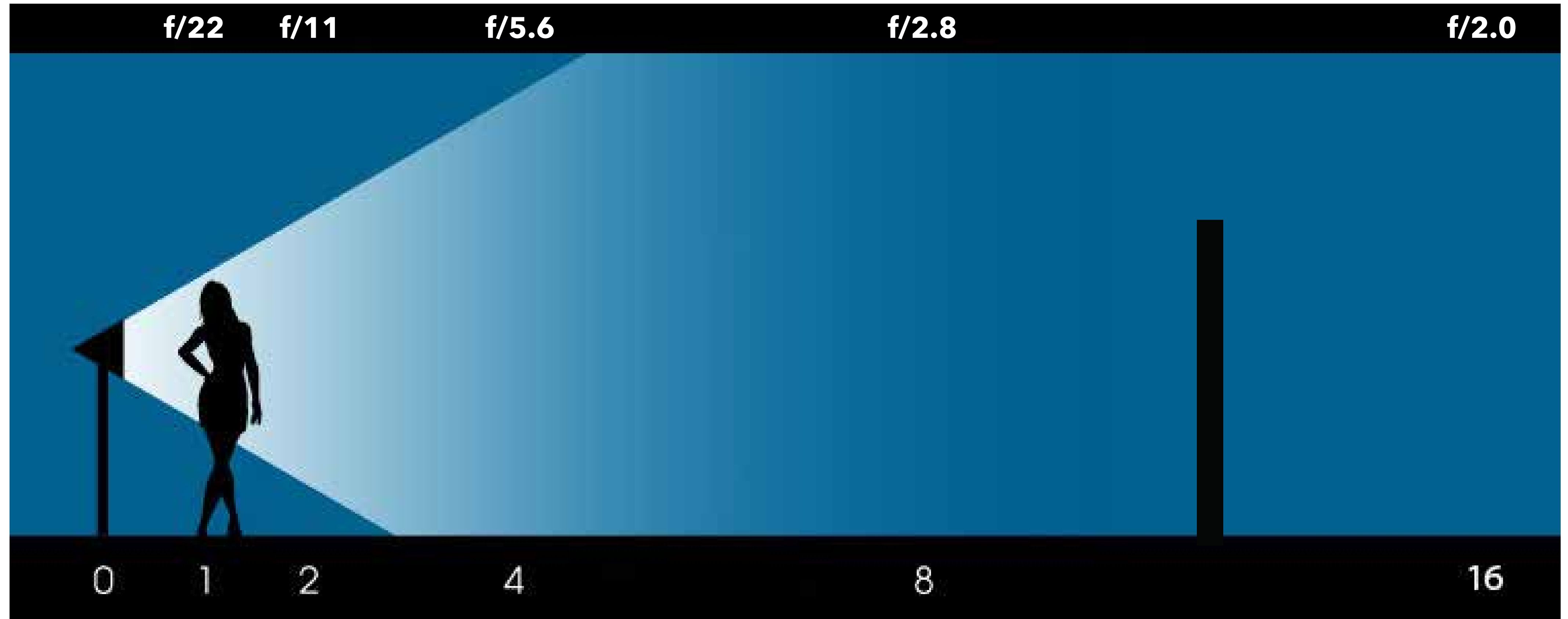


**FAR FROM THE SUBJECT**

**THE SIZE OF THE LIGHT SOURCE WILL BE RELATIVE TO THE SIZE OF THE SUBJECT**



# INVERSE SQUARE LAW

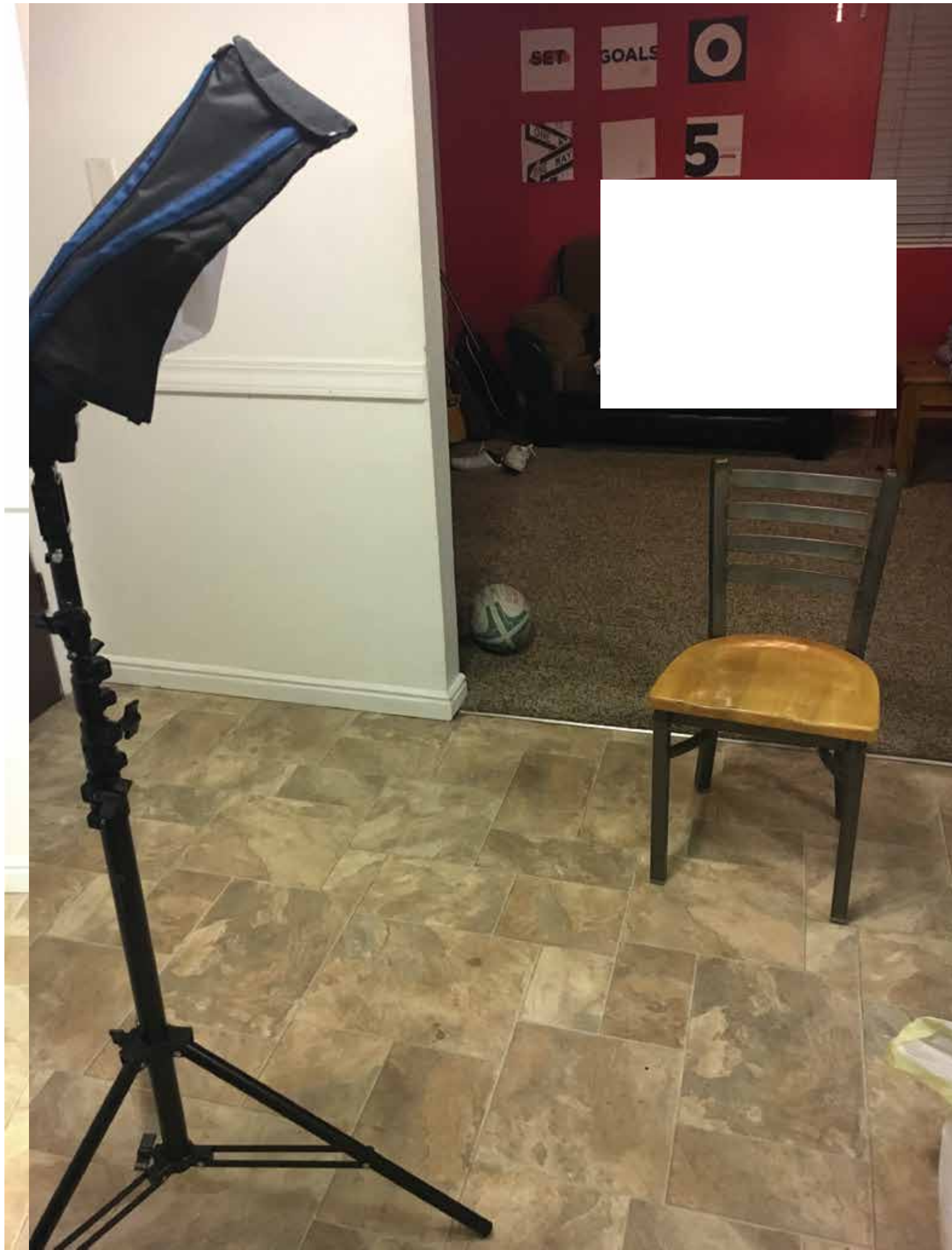


**FULL STOPS:** f/22 f/16 f/11 f/8 f/5.6 f/4 f/2.8

# APPLIED **INVERSE SQUARE LAW**

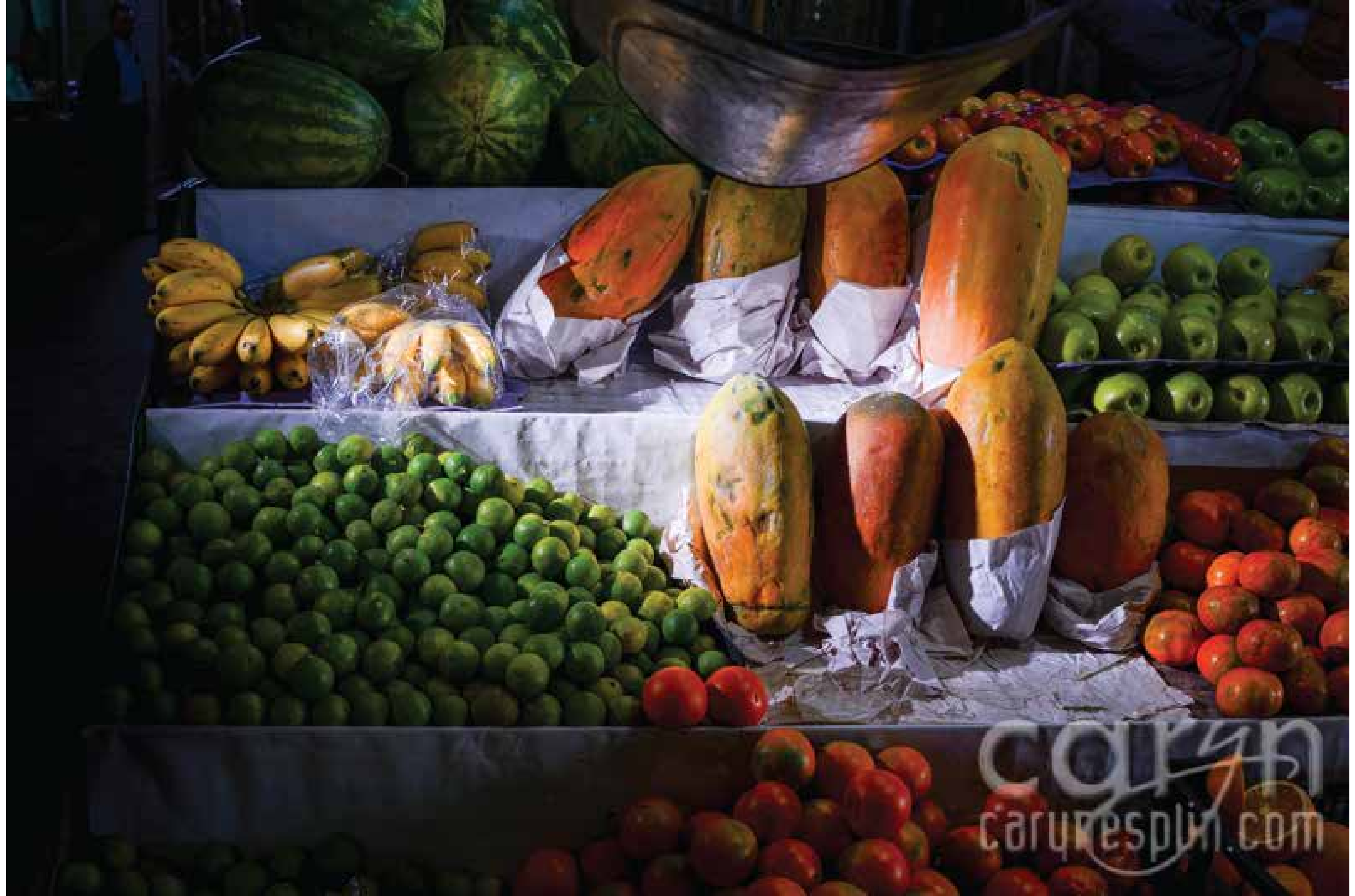


# APPLIED INVERSE SQUARE LAW



**SQIBB**

Studio Quality Invisible Black Background

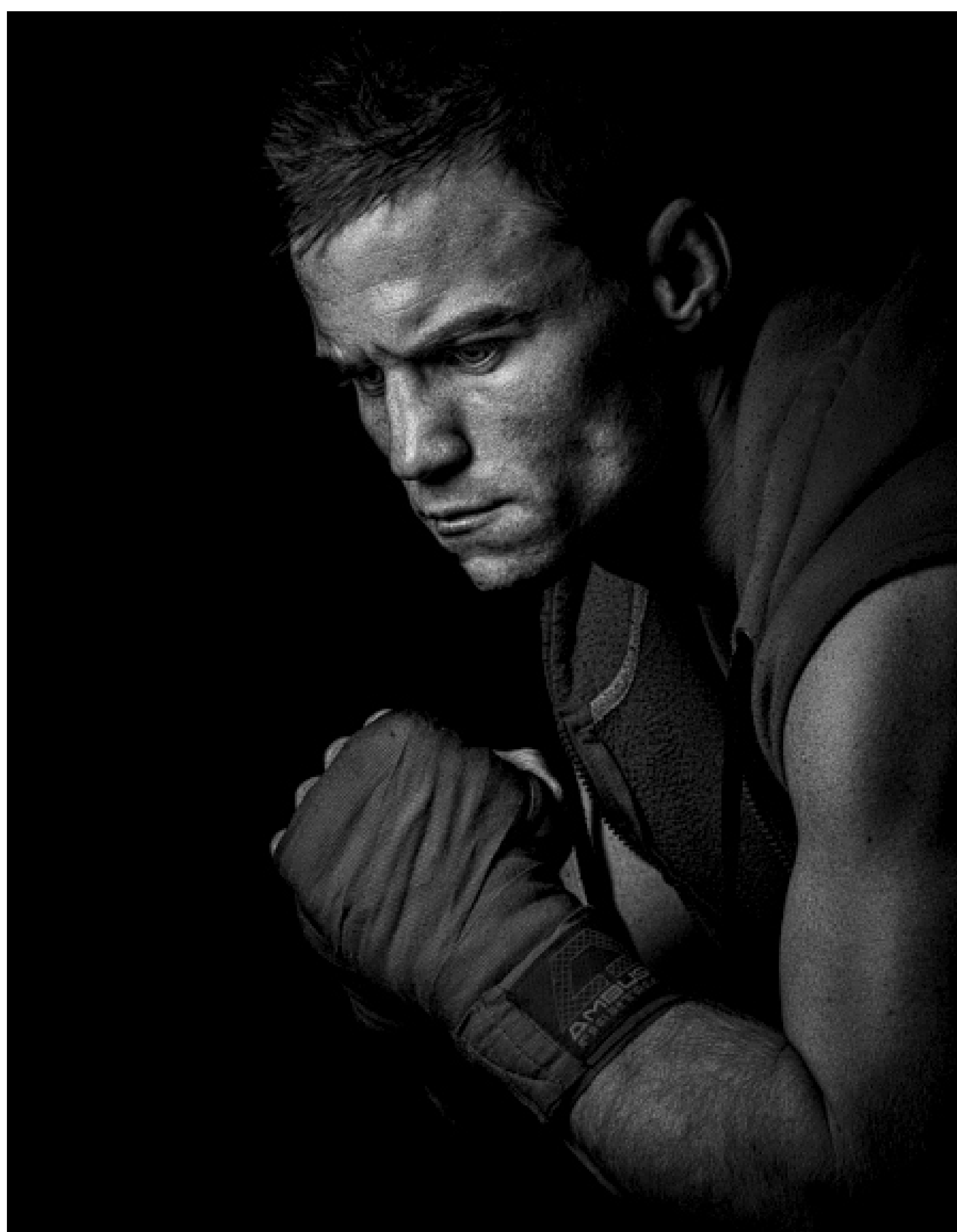


caru  
carurespina.com



caryn  
carynrespln.com









*Last  
Chance*  
PHOTO & DESIGN



ben  
harker  
photo

**DAVE BLACK**



